



# EUROREELS

RELIABLE CHOICE IN INDUSTRIAL REELS



*Euroreels*  
**2025**





# EUROREELS

RELIABLE CHOICE IN INDUSTRIAL REELS

## About Us

**Euroreels** was founded in 2023 in Ankara and quickly became a leading manufacturer of hose reels, cable reels, and mobile crane reels.

The company stands out not only with its standard products but also with customized solutions that set new standards in the industry.

Committed to excellence, **Euroreels** upholds the highest standards of quality, durability, and reliability. With an innovative approach, it strengthens its position through robust products and superior service.

Known for reliability and a customer-centric mindset, **Euroreels** continues to further strengthen its position through continuous quality and innovation.



## Products and Services

**Euroreels** manufactures high-quality hose and cable reels for various industrial applications. Our diverse product range is designed to meet the unique needs of different industries.

Our reels are known for their durability, robustness, and long-lasting performance. Through custom engineering solutions, we develop tailored reel solutions to meet specific requirements.

## Team and Innovation

**Euroreels** is powered by a team of expert engineers and innovators dedicated to continuous R&D investment. By integrating the latest technologies and advanced methods into our production processes, we consistently deliver cutting-edge solutions to our customers.

## Vision and Mission

Our vision is to establish **Euroreels** as a strong brand on the global stage, shaping the future of the reel manufacturing industry.

We strive to enhance our ability to provide tailored solutions, strengthen our industry leadership, and achieve global recognition.

Our mission is to uphold excellence in quality and service, maximize customer satisfaction, and optimize the performance and longevity of our reels.

We are committed to sustainable production and eco-friendly practices, ensuring long-term value for our customers and the environment.

## Future Goals

Through our customer-centric approach, we aim to make a difference in every project and reinforce our position as a trusted industry leader. With a strong vision for global success, we are dedicated to setting new standards in the reel manufacturing industry.





# EUROREELS

RELIABLE CHOICE IN INDUSTRIAL REELS

## What is a Reel/Drum?

A reel or drum is a system designed to neatly store and manage long, flexible materials such as hoses, cables, or ropes. Available in various sizes and configurations, reels facilitate the smooth unwinding and automatic retraction of these materials during use. Depending on the application, they can be operated manually or powered by mechanisms such as springs, electric motors, pneumatic motors, or hydraulic motors.



## What are the Uses of Reels?

Reels are designed to efficiently manage materials wound around them, offering several key benefits:

- **Organized and Safe Storage:** Keeps cables, hoses, and ropes neatly stored.
- **Tangle-Free Unwinding:** Ensures smooth extension without twisting or damage.
- **Ease of Transport and Handling:** Facilitates easy movement and storage.
- **Automatic Retraction:** Enables automated retraction of cables and hoses in various systems.

## Mobile Crane Applications

In mobile crane systems, hydraulic hoses extend alongside the boom to deliver pressurized fluid to hydraulic pistons. This extension is managed by a drum system. When the boom retracts, the hoses are automatically wound back using springs, ensuring seamless system operation.

## Where Is It Used?

- **Industry & Construction:** For electrical cables and hydraulic hoses.
- **Defense Industry:** For specially designed power and fiber optic cable systems.
- **Agriculture:** For irrigation hoses.
- **Electric Vehicles:** For charging and power cable management.
- **Industrial Facilities:** For air, power, and oxygen-acetylene transfer.
- **Facade Lifts:** For energy transfer.
- **Portal Cranes:** For power transmission.
- **Truck-Mounted Platforms:** For power and hydraulic transmission.
- **Street Sweeping Vehicles:** For pressurized fluid transfer.
- **Concrete Mixers:** For hydraulic and power transfer.

## What Are the Benefits?

- *Time Savings: Speeds up work processes with quick unwinding and rewinding mechanisms.*
- *Long Lifespan: Protects cables and hoses, extending service life.*
- *Space Efficiency: Keeps materials stored in an organized manner, saving space.*
- *Workplace Safety: Reduces accidents caused by clutter and disorganization.*



**“We don’t just manufacture – we innovate for tomorrow’s needs.”**

# EUROREELS | 2025



## CABLE REELS - CORD REELS

- Custom Made Cable / Cord Reels

6



## WATER HOSE REELS

- On-Board Equipment Reels
- Pressure Washer Reels

7



## FUEL HOSE REEL

- Fuel Supply Reels
- Oil / Gas Reels

8



## HYDRAULIC HOSE REEL

- High Pressure Hose Reels

9



## OXYGEN - ACETYLENE HOSE REEL

- Twin Line Welding Reels

10

# EUROREELS | 2025



## AIR HOSE REEL

- *Custom Made Air Hose Reels*

11



## MINI AIR HOSE REE

- *Multi Purpose Mini Reel*

12



## TWIN HYDRAULIC HOSE REELS

- *Twin Hose Reels*
- *Three-way Hydraulic Hose Reels*
- *Four-way Hydraulic Hose Reels*

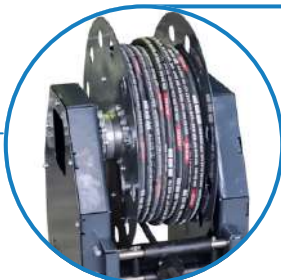
13



## HEAVY INDUSTRY CABLE REEL

- *Long Length Cable Reels*

14



## HEAVY DUTY INDUSTRIAL HOSE REEL

- *Long Length Hose Reels*

15

# EUROREELS | 2025



## HYDROLIC MOTOR-DRIVEN HOSE REELS

- *Vacuum / Sewage Truck Hose Reels*

16



## DEFENSE INDUSTRY / MILITARY REELS

- *Fiber Optic Cable Reels*

17





# CABLE REEL

## Suitable for Transmission:

- Power
- Signal
- Audio/Video
- Data

## Areas Used:

- Charging Carts
- Charging Stations
- Industrial Facilities
- Facade Elevators
- Portal Crane
- Basket Crane
- Marine
- Aviation

## Key Features

- Steel body
- Retractable
- Silver/Gold contact bracelet
- Project-specific ergonomic design
- Long-lasting and safe use
- Easy installation and assembly
- Adjustable cable exit direction



Working Features	
Cable Input	From junction box
Cable Output	Optional custom connector (upon request)
Maximum Current	120A @380V/220V
Cable Core Capacity	Up to 24 power + 12 signal cores

Color (RAL7016)



Standard Product Features	
Standard	TS EN 50525-2-11, VDE 0281, BS 6500, IEC 60227
Cable Type	5x4 mm <sup>2</sup> H05VV-F, TTR
Length	20 m
Max Amper	30 A for each cable
Maximum Cable Length	Up to 30 meters (For up to 100 meters, see page 14)

*\*Please contact us for your special manufacturing requests and technical drawings.*



# WATER HOSE REEL

## Suitable for Fluid Transfer:

- Water (Hot/Cold)
- Washing Chemicals
- Pressure Washing

## Areas Used:

- Garbage Trucks
- Street Sweepers
- Concrete Mixers
- Washing Stations
- Multiple Industries

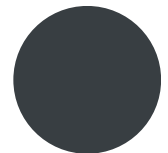
## Key Features

- Steel body
- Retractable
- Full stainless steel fluid path
- Locking mechanism / Ratchet system
- Corrosion resistant solid brass fittings
- Durable and safe operation
- Easy installation and assembly
- High working pressures



Working Features	
Feed Spindle Entry	M18x1.5 mm Male
Outlet Connection	G3/8" Male
Maximum Working Pressure of Reel	350 bar
Hose Working Pressure	Depends on system specifications; consult us for details

Color (RAL7016)



Standard Product Features	
Standard	SAE 100 R1 AT/DIN-EN 583 1 SN
Hose Inner - Outer Diameter (Ø)	8 mm - 13,2 mm
Length	10 mt
Hose Working Pressure	225 bar
Maximum Length	10 m (For up to 100 m see page 15)

*\*Please contact us for your special manufacturing requests and technical drawings.*





# FUEL HOSE REEL

### Suitable for Fluid Transfer:

- Diesel
- Fuel Oil
- LPG
- AdBlue

### Areas Used:

- Fuel Stations
- Fuel Tankers
- Military and Civilian Supply Vehicles
- Mobilized Generators
- Airport Ground Handling
- Mines
- Marines / Harbors

### Key Features

- Steel body
- Retractable
- Full stainless steel fluid path
- Project-specific ergonomic design
- Long-lasting and safe use
- Easy installation and assembly



Working Features	
Feed Spindle Entry	G3/4" Female
Outlet Connection	G3/4" Male
Maximum Working Pressure of Reel	25 bar
Hose Working Pressure	Varies by application

Color (RAL7016)

Standard Product Features	
Standard	TS 9464 EN 1761 / Type D
Hose Inner - Outer Diameter (Ø)	19mm-31mm
Length	15 m
Hose Working Pressure	16 bar
Maximum Length	15 m (For up to 61 m see page 15)

*\*Please contact us for your special manufacturing requests and technical drawings.*



# HYDRAULIC HOSE REEL

## Suitable for Fluid Transfer:

- Hydraulic Oil
- Engine Oil
- Grease
- Special Lubricants
- Additives

## Areas Used:

- Cranes
- Hydraulic Units
- Hydraulic Automated Systems
- Forklifts
- Hydraulic Garbage Compactor
- Service Bays / Garages
- Shipyards & Marinas
- Construction Equipment

## Key Features

- Steel body
- Retractable
- Full stainless steel fluid path
- High working pressures
- Long-lasting and safe use
- Easy installation and assembly
- Adjustable hose outlet direction



### Working Features

Feed Spindle Entry	G3/8" Male
Outlet Connection	G3/8" Male
Maximum Working Pressure of Reel	350 bar
Hose Working Pressure	Varies by application

Color (RAL7016)



### Standard Product Features

Standard	SAE 100 R2 AT/DIN-EN 853 2SN
Hose Inner - Outer Diameter (Ø)	10-18.9 mm
Length	15 m
Hose Working Pressure	330 bar
Maximum Length	30 m (For up to 100 m see page 15)

*\*Please contact us for your special manufacturing requests and technical drawings.*



# OXY-ACETYLENE / WELDING HOSE REEL

## Suitable for Fluid Transfer:

- Oxygen
- Acetylene
- LPG
- Air

## Areas Used:

- Welding Workshops
- Iron-Steel Industry
- Oxygen Cutting
- Shipyards / Harbors
- Mining and Construction
- Service Bays / Garages
- Construction
- Aviation / Aerospace

## Key Features

- Steel body
- Retractable
- Full stainless steel fluid path
- Long-lasting and safe use
- Easy installation and assembly
- Adjustable hose outlet direction
- Project-specific ergonomic design
- Custom fire resistant hose



### Working Features

Feed Spindle Entry	G3/8" Male
Outlet Connection	G3/8" Male
Maximum Working Pressure of Reel	25 bar
Hose Working Pressure	Varies by application

Color (RAL7016)



### Standard Product Features

Standard	TS EN ISO 3821
Hose Inner - Outer Diameter (Ø)	10-17 mm
Length	15 m
Hose Working Pressure	20 bar
Maximum Length	Up to 30 meters (For up to 100 meters, see page 15)

*\*Please contact us for your special manufacturing requests and technical drawings.*



# AIR HOSE REEL

## Suitable for Transferring:

- Oxygen
- Acetylene
- Air

## Areas Used:

- Manufacturing / Fabrication Shops
- Paint Shops
- Automated Systems
- Tire Services
- Pneumatic Air Tools

## Key Features

- Steel body
- Retractable
- Full stainless steel fluid path
- Long-lasting and safe use
- Easy installation and assembly
- Wear-resistant guides
- Wide range of mounting options



### Working Features

Feed Spindle Entry	M18x1.5 mm Male
Outlet Connection	G3/8" Male
Maximum Working Pressure of Reel	25 bar / 362 psi
Hose Working Pressure	Varies by application

Color (RAL7016)



### Standard Product Features

Standard	TS EN ISO 2398 Type 2 Class A
Hose Inner - Outer Diameter (Ø)	10 mm-18 mm
Length	15 m
Hose Working Pressure	16 bar / 232 psi
Maximum Length	40 m (For up to 100 m see page 15)

*\*Please contact us for your special manufacturing requests and technical drawings.*



# MINI AIR HOSE REEL

## Suitable for Transferring:

- Air

## Areas Used:

- Factories
- Lean production lines
- 5S method applications
- Mobilized vehicle applications

## Key Features

- Plastic injection body
- Retractable
- Full stainless steel fluid path
- Ergonomic design
- Self-lubricating bronze bearing
- Easy installation and assembly
- Automatic sequential winding



Working Features	
Feed Spindle Entry	G1/4" Female
Outlet Connection	G1/4" Male
Maximum Working Pressure of Reel	10 bar
Hose Working Pressure	10 bar

Color (RAL9016)



Standard Product Features	
Standard	-
Hose Inner - Outer Diameter (Ø)	6-10 mm
Length	1 m
Hose Working Pressure	10 bar
Maximum Length	1 m+5 m

*\*Please contact us for your special manufacturing requests and technical drawings.*



# TWIN HYDRAULIC HOSE REEL

## Suitable for Fluid Transfer:

- Hydraulic Oil

## Areas Used:

- Cranes / Mobile Cranes
- Tower Cranes
- Hydraulic Units
- Hydraulic Automated Systems
- Forklifts
- Compressed Garbage Trucks
- Aerial Platforms

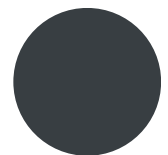
## Key Features

- Steel body
- Retractable
- Full stainless steel fluid path
- Long-lasting and safe use
- Easy installation and assembly
- 2-way (port), 3-way, 4-way joint options



Working Features	
Feed Spindle Entry	G1/2" Male
Outlet Connection	G1/2" Male
Maximum Working Pressure of Reel	400 bar
Hose Working Pressure	Varies by application

Color (RAL7016)



Standard Product Features	
Standard	DIN EN 857 2SC
Hose Inner - Outer Diameter (Ø)	10 mm-17,5 mm-17,5 mm
Length	8 m
Hose Working Pressure	330 bar @3/8" R2AT
Maximum Length	18 m

*\*Please contact us for your special manufacturing requests and technical drawings.*



# HEAVY INDUSTRIAL CABLE REEL

## Suitable for Transmission:

- Signal
- Power
- Audio/Video
- Data

## Areas Used:

- Charging Carts
- Charging Stations
- Industrial Facilities
- Facade Elevators
- Portal Crane
- Basket Crane
- Marines / Harbors
- Aviation / Aerospace

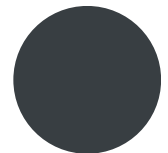
## Key Features

- Steel body
- Retractable
- Higher Lengths
- High torque (Gear group)
- With cable guide
- Suitable for heavy industry conditions



Working Features	
Cable Input	From junction box
Cable Output	Optional custom connector (upon request)
Maximum Current	120A @380V/220V
Cable Core Capacity	Up to 24 power + 12 signal cores

Color (RAL7016)



Standard Product Features	
Standard	TS EN 50525-2-11, VDE 0281, BS 6500, IEC 60227
Cable Type	5x4mm <sup>2</sup> H05VV-F, TTR
Length	100mt.
Max Amper	30A for each cable
Maximum Length	up to 120 meters

*\*Please contact us for your special manufacturing requests and technical drawings.*



# HEAVY INDUSTRY HOSE REEL

## Suitable for Fluid Transfer:

- Oxygen-Acetylene
- Air
- Liquid Propellant
- Grease
- Hydraulic

## Areas Used:

- Iron/Steel Industries
- Cranes
- Production Lines
- Mines
- Ports / Harbors
- Aviation
- Construction

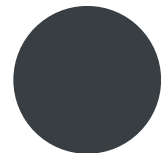
## Key Features

- Steel body
- Retractable
- Higher Lengths
- High torque (Gear group)
- With hose guide
- Suitable for heavy industry conditions



Working Features	
Feed Spindle Entry	G1/2" Male
Outlet Connection	G1/2" Male
Maximum Working Pressure of Reel	400 bar
Hose Working Pressure	Varies by application and hose type

Color (RAL7016)



Standard Product Features	
Standard	Completely project specific
Hose Inner - Outer Diameter (Ø)	Completely project specific
Length	Completely project specific
Hose Working Pressure	Completely project specific
Maximum Length	up to 200 meters

*\*Please contact us for your special manufacturing requests and technical drawings.*





# HYDRAULIC MOTOR-DRIVEN HOSE REEL

## Suitable for Fluid Transfer:

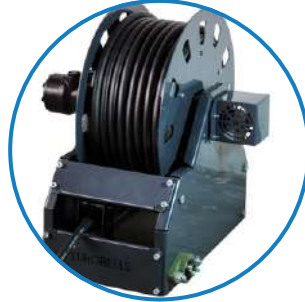
- Water
- Hydraulic oil
- Grease

## Areas Used:

- Sewage/Vacuum Trucks
- Municipality Cleaning Vehicles
- Concrete Mixers
- Fire Fighting Vehicles
- Agricultural and Forestry Applications
- Energy and Oil Industries

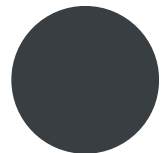
## Key Features

- Steel body
- Retractable / Manual
- Higher Lengths
- High torque
- With hose guide
- Suitable for heavy industry conditions
- Row spiral system (shaper spindle)



Working Features	
Feed Spindle Entry	G1/2" Male
Outlet Connection	G1/2" Male
Maximum Working Pressure of Reel	400 bar
Hose Working Pressure	Varies by application and hose type

Color (RAL7016)



Standard Product Features	
Standard	DIN EN 857 2SC
Hose Inner - Outer Diameter (Ø)	12,5 mm-20,7 mm
Length	30 m
Hose Working Pressure	275 bar @1/2" R2AT
Maximum Length	up to 100 meters

*\*Please contact us for your special manufacturing requests and technical drawings.*



# DEFENSE INDUSTRY / MILITARY REEL

## Suitable for Transmission:

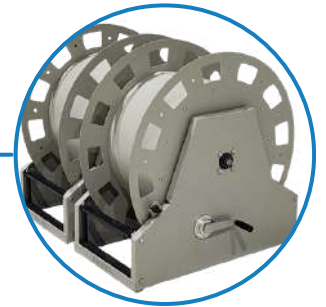
- Power
- Audio/Video
- Data
- Signal

## Areas Used:

- Military Applications
- Mobile Emergency Telecommunications Stations
- Mobile Tactical Shelters
- Broadcast
- Emergency Restoration and Deployable Communications
- Firefighting and Rescue (Hose)
- Hazmat Clean Up (Hose)

## Key Features

- Lightweight steel body
- Retractable or Manual
- Adjustable lengths
- Easy locking mechanism
- Suitable for heavy industry conditions
- Foldable crank handle
- High torque (Gear Group)
- Anodized coating



Working Features	
Cable Connection Input	From the junction box
Cable Output	Optional custom connector (upon request)
Maximum Amperes	Project-based (contact for specifications)
Maximum Number of Cable Cores	-

Color (RAL7033)



- CARC Green
- CARC Desert Tan
- Black Powder Coat

Standard Product Features	
Standard	-
Cable / Hose Type	Project Based
Length	Project Based
Max Amper	Project Based
Maximum Length	up to 500 meters

*\*Please contact us for your special manufacturing requests and technical drawings.*



# EUROREELS

RELIABLE CHOICE IN INDUSTRIAL REELS

**SQR CERTIFICATION**

**Sertifika**  
CERTIFICATE

**EUROREELS MAKİNA SANAYİ VE TİCARET LİMİTED ŞİRKETİ**

SARAY MAH. 42 CAD. NO: 7 C KAHRAMANKAZAN ANKARA

**ISO 9001:2015**

Kapsam/Scope  
ENDÜSTRİYEL BORTUM VE KABLO MAKARALARI ÜRETİMİ VE SATIŞI  
PRODUCTION AND SALES OF INDUSTRIAL HOSE AND CABLE REELS

EA 1047

**IAF IAS**

**KING CERT**

**SERTİFİKA**

**Euroreels Makina Sanayi ve Ticaret Ltd. Şti.**

Saray Mahallesi 42 Caddesi No: 7 C Kahramankazan Ankara Türkiye

**ISO 45001:2018**  
İş Sağlığı ve Güvenliği Yönetim Sistemi

Kapsam : Endüstriyel Hortum ve Kablo Makaraları Üretimi ve Satış

IAF/EA Kodu: 17

**IAS ACCREDITED**  
**IAF**

**SQR CERTIFICATION**

**Sertifika**  
CERTIFICATE

**EUROREELS MAKİNA SANAYİ VE TİCARET LİMİTED ŞİRKETİ**

SARAY MAH. 42 CAD. NO: 7 C KAHRAMANKAZAN ANKARA

**ISO 14001:2015**

Kapsam/Scope  
ENDÜSTRİYEL BORTUM VE KABLO MAKARALARI ÜRETİMİ VE SATIŞI  
PRODUCTION AND SALES OF INDUSTRIAL HOSE AND CABLE REELS

EA 1047

**IAF IAS**



# EUROREELS



INTERNATIONAL ACCREDITATION SERVICE™



9001 : 2015



14001 : 2015



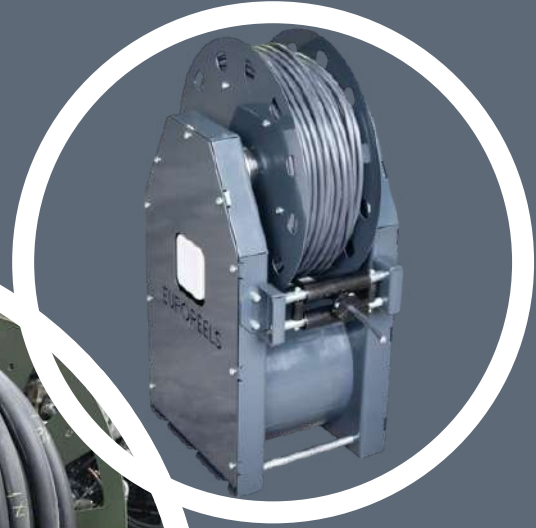
45001 : 2018





# EUROREELS

RELIABLE CHOICE IN INDUSTRIAL REELS



Nazim Ercan Bulvarı No:4 - 06980  
Kahramankazan / ANKARA



+90 541 747 62 54



info@euroreels.com



www.euroreels.com